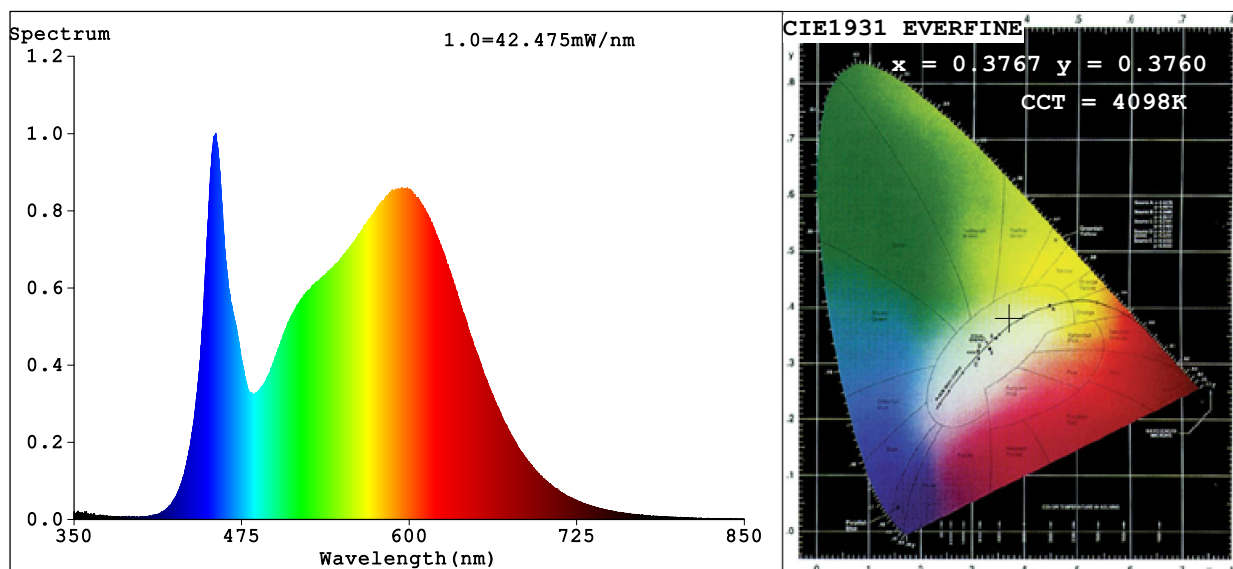


## Spectrum Test Report



### Color Parameters:

Chromaticity Coordinate:  $x=0.3767$   $y=0.3760$   $u'=0.2229$   $v'=0.5007$

CCT=4098K (Duv=0.0008) Dominant WL:Ld =578.3nm Purity=25.9%

Ratio:R=18.2% G=77.6% B=4.2%; Peak WL:Lp=455.6nm FWHM=25.2nm

Render Index:Ra=84.4 CRI=78.4 TM30:Rf=82 Rg=94

R1 =83 R2 =93 R3 =96 R4 =81 R5 =83 R6 =89 R7 =85

R8 =65 R9 =13 R10=81 R11=80 R12=63 R13=86 R14=98 R15=77

### Photo Parameters:

Flux = 2105 lm Eff. : 109.38 lm/W Fe = 6.460 W

### Electrical parameters:

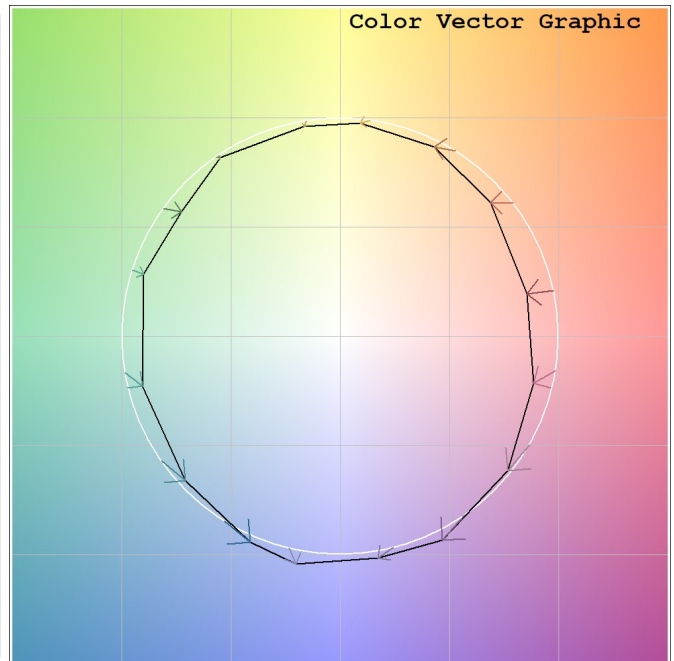
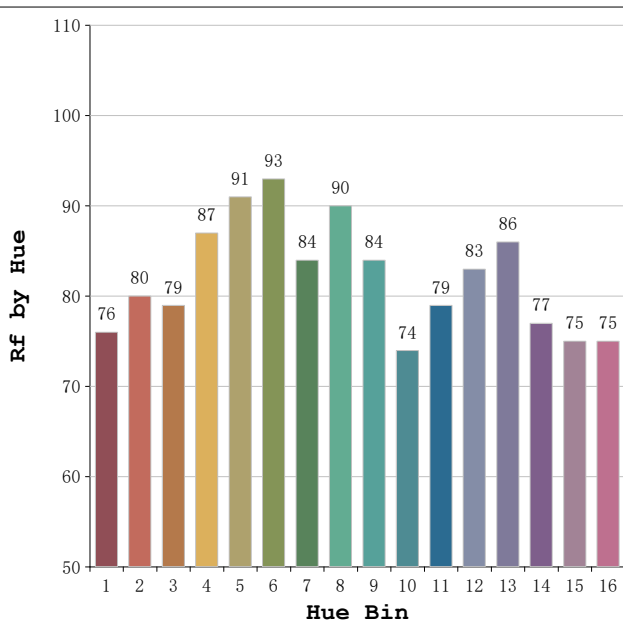
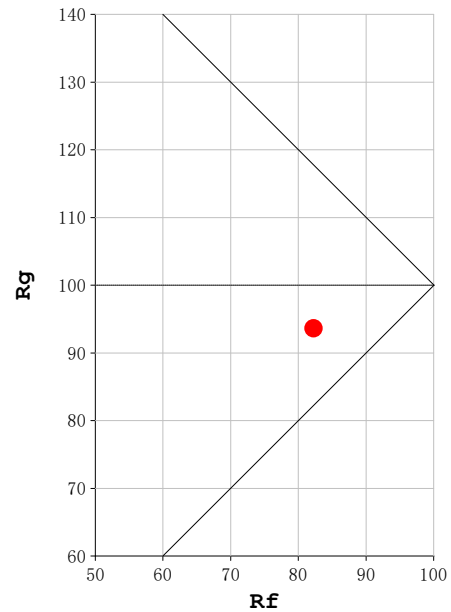
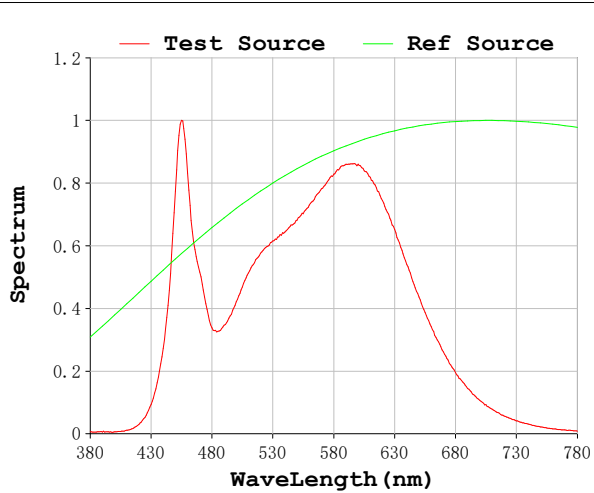
V = 23.998 V I = 0.8019 A P = 19.24 W PF = 1.000

Status: Integral T = 545 ms Ip = 40324 (62%)

Model:Ecoled Roll to roll  
Tester:Sergio Carneros  
Temperature:20Deg  
Manufacturer:Luz Negra

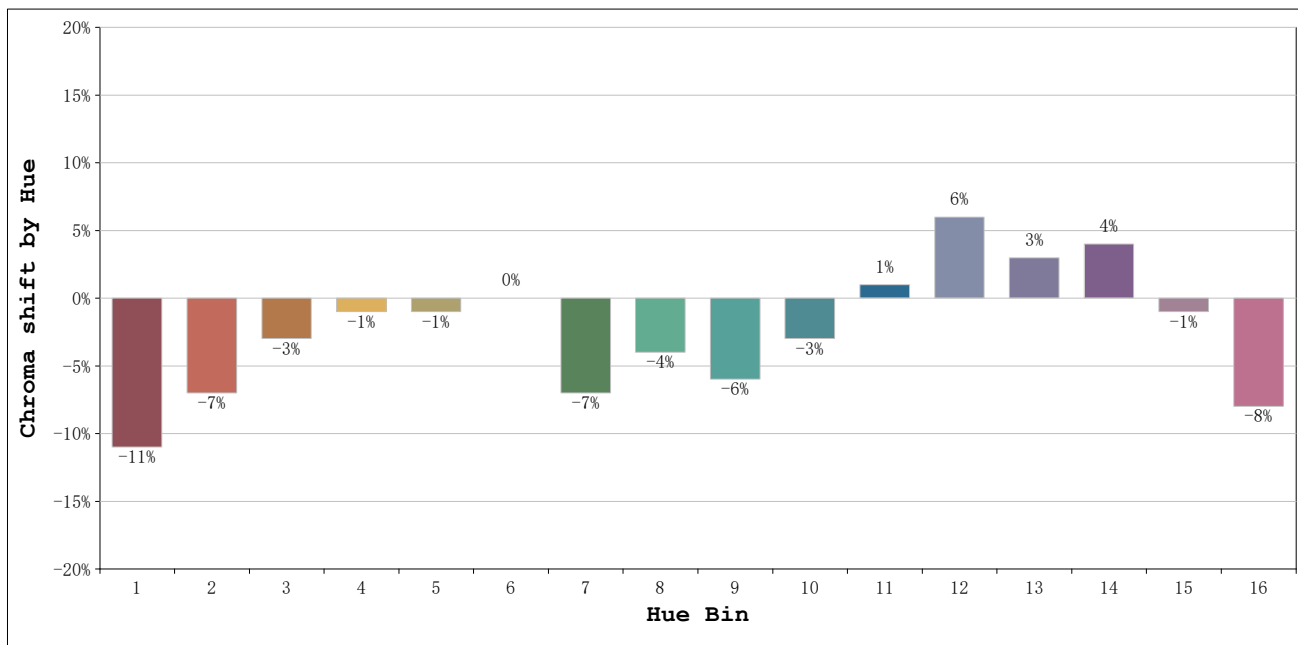
Number: 31.273  
Date:2025-06-17 08:04:11  
Humidity:50%  
Remarks:100cm de tira flexible

**Rf: 82**      **CCT: 4098 K**      **u': 0.2229**  
**Rg: 94**      **Duv: 0.0008**      **v': 0.5007**



Model:Ecoled Roll to roll  
 Tester:Sergio Carneros  
 Temperature:20Deg  
 Manufacturer:Luz Negra

Number: 31.273  
 Date:2025-06-17 08:04:11  
 Humidity:50%  
 Remarks:100cm de tira flexible



			Graphic shift(%)	
Hue Bin	Hue Angle	Rf	Chroma	Hue
1	0.0° - 22.5°	76	-11	1
2	22.5° - 45.0°	80	-7	6
3	45.0° - 67.5°	79	-3	9
4	67.5° - 90.0°	87	-1	4
5	90.0° - 112.5°	91	-1	2
6	112.5° - 135.0°	93	0	-1
7	135.0° - 157.5°	84	-7	-2
8	157.5° - 180.0°	90	-4	1
9	180.0° - 202.5°	84	-6	8
10	202.5° - 225.0°	74	-3	14
11	225.0° - 247.5°	79	1	15
12	247.5° - 270.0°	83	6	4
13	270.0° - 292.5°	86	3	-7
14	292.5° - 315.0°	77	4	-14
15	315.0° - 337.5°	75	-1	-14
16	337.5° - 360.0°	75	-8	-7

Model:Ecoled Roll to roll  
 Tester:Sergio Carneros  
 Temperature:20Deg  
 Manufacturer:Luz Negra

Number: 31.273  
 Date:2025-06-17 08:04:11  
 Humidity:50%  
 Remarks:100cm de tira flexible